

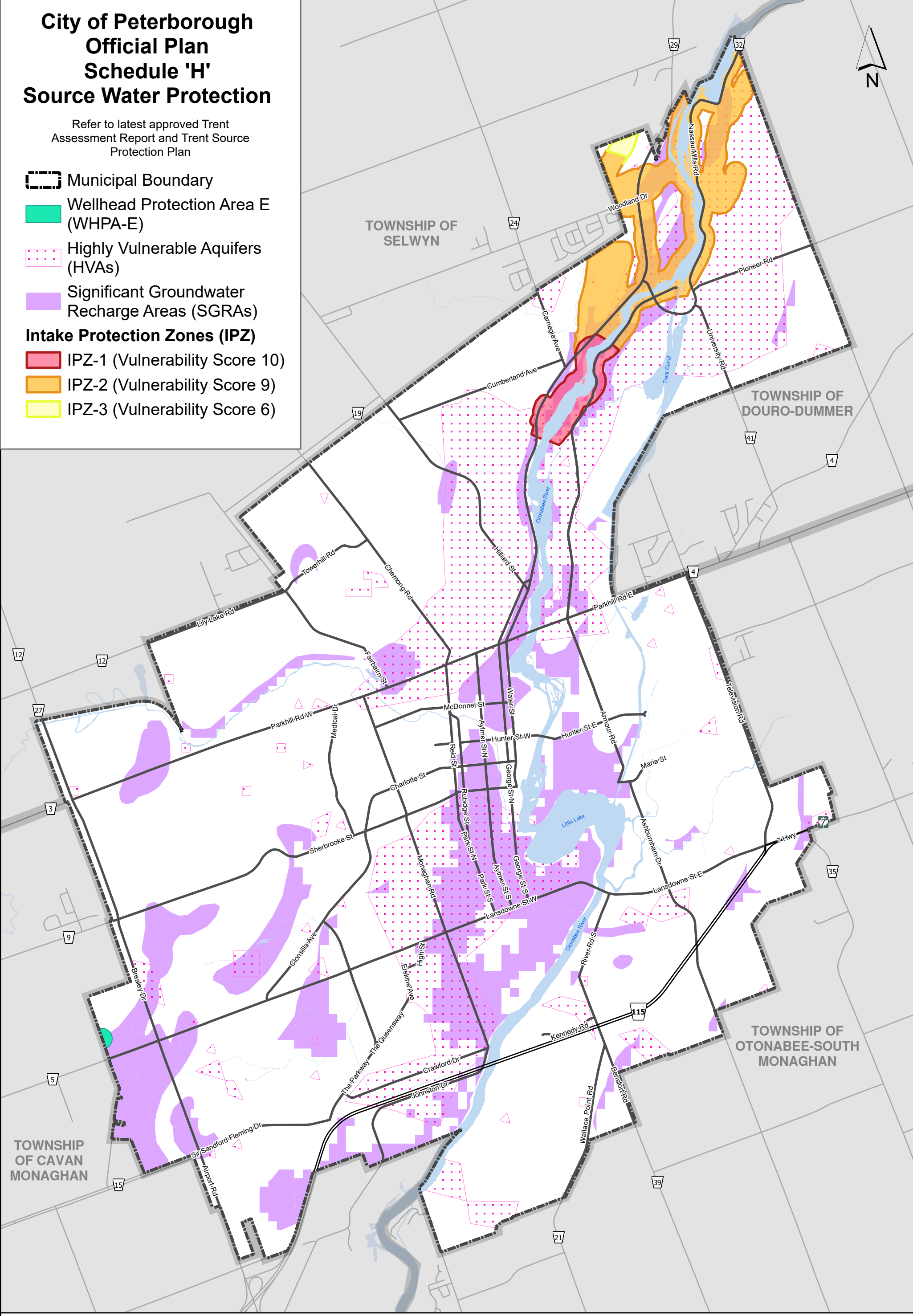
City of Peterborough  
Official Plan  
Schedule 'H'  
Source Water Protection

Refer to latest approved Trent  
Assessment Report and Trent Source  
Protection Plan

- Municipal Boundary
- Wellhead Protection Area E (WHPA-E)
- Highly Vulnerable Aquifers (HVAs)
- Significant Groundwater Recharge Areas (SGRAs)

Intake Protection Zones (IPZ)

- IPZ-1 (Vulnerability Score 10)
- IPZ-2 (Vulnerability Score 9)
- IPZ-3 (Vulnerability Score 6)



DISCLAIMER OF ALL LIABILITIES - The Corporation of the City of Peterborough, its employees, consultants and agents, make no representation or warranty concerning the accuracy, validity or fitness for use of the contents of this digital or hard copy mapfile, and disclaims all liability for any claims for damages or loss arising from their use or interpretation by any party. A mapfile does not replace a survey nor is it to be used to provide a legal description.

Provincial Approval: April 11, 2023

