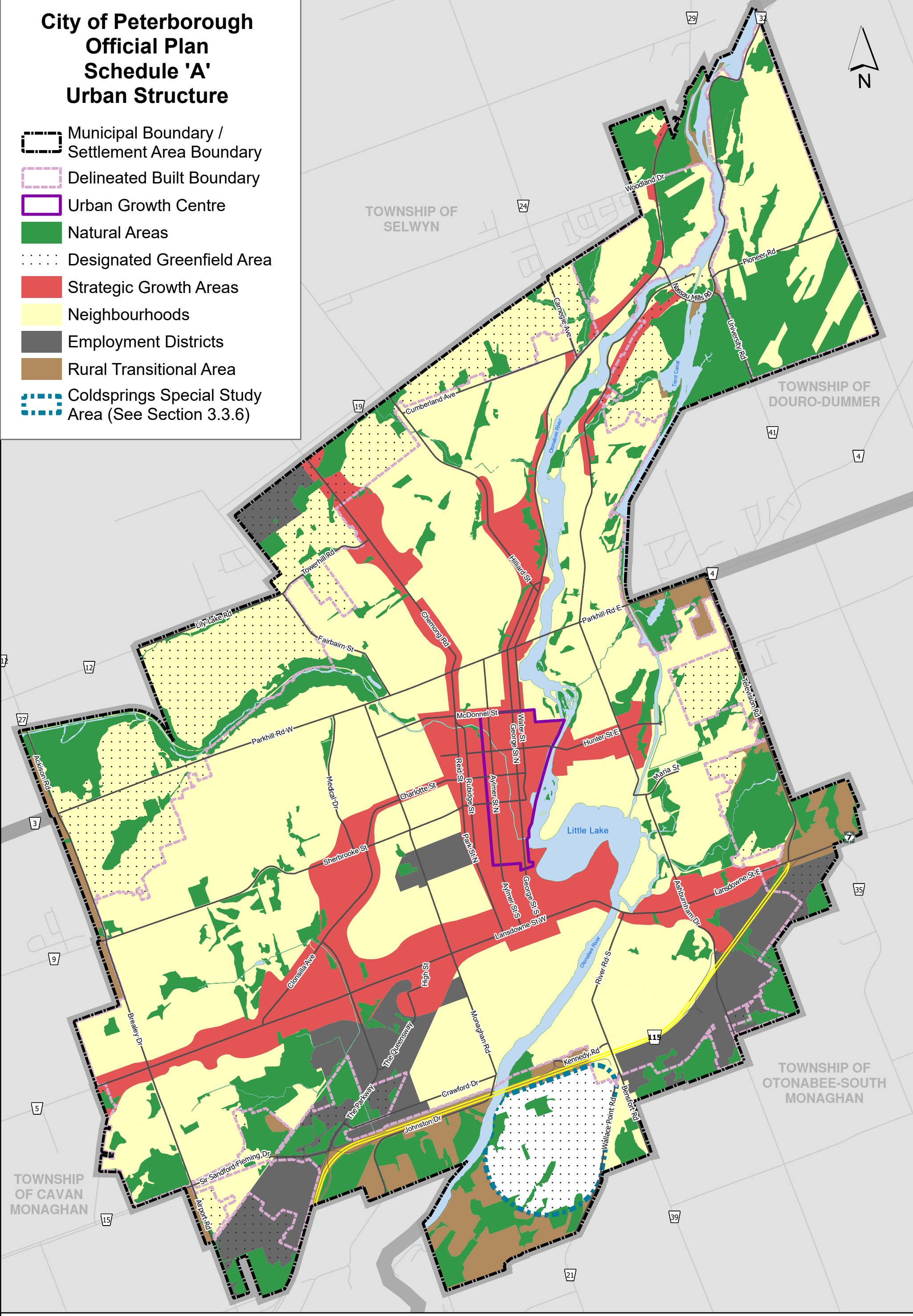


City of Peterborough  
Official Plan  
Schedule 'A'  
Urban Structure

- Municipal Boundary / Settlement Area Boundary
- Delineated Built Boundary
- Urban Growth Centre
- Natural Areas
- Designated Greenfield Area
- Strategic Growth Areas
- Neighbourhoods
- Employment Districts
- Rural Transitional Area
- Coldsprings Special Study Area (See Section 3.3.6)



DISCLAIMER OF ALL LIABILITIES - The Corporation of the City of Peterborough, its employees, consultants and agents, make no representation or warranty concerning the accuracy, validity or fitness for use of the contents of this digital or hard copy mapfile, and disclaims all liability for any claims for damages or loss arising from their use or interpretation by any party. A mapfile does not replace a survey nor is it to be used to provide a legal description.

Provincial Approval: April 11, 2023

