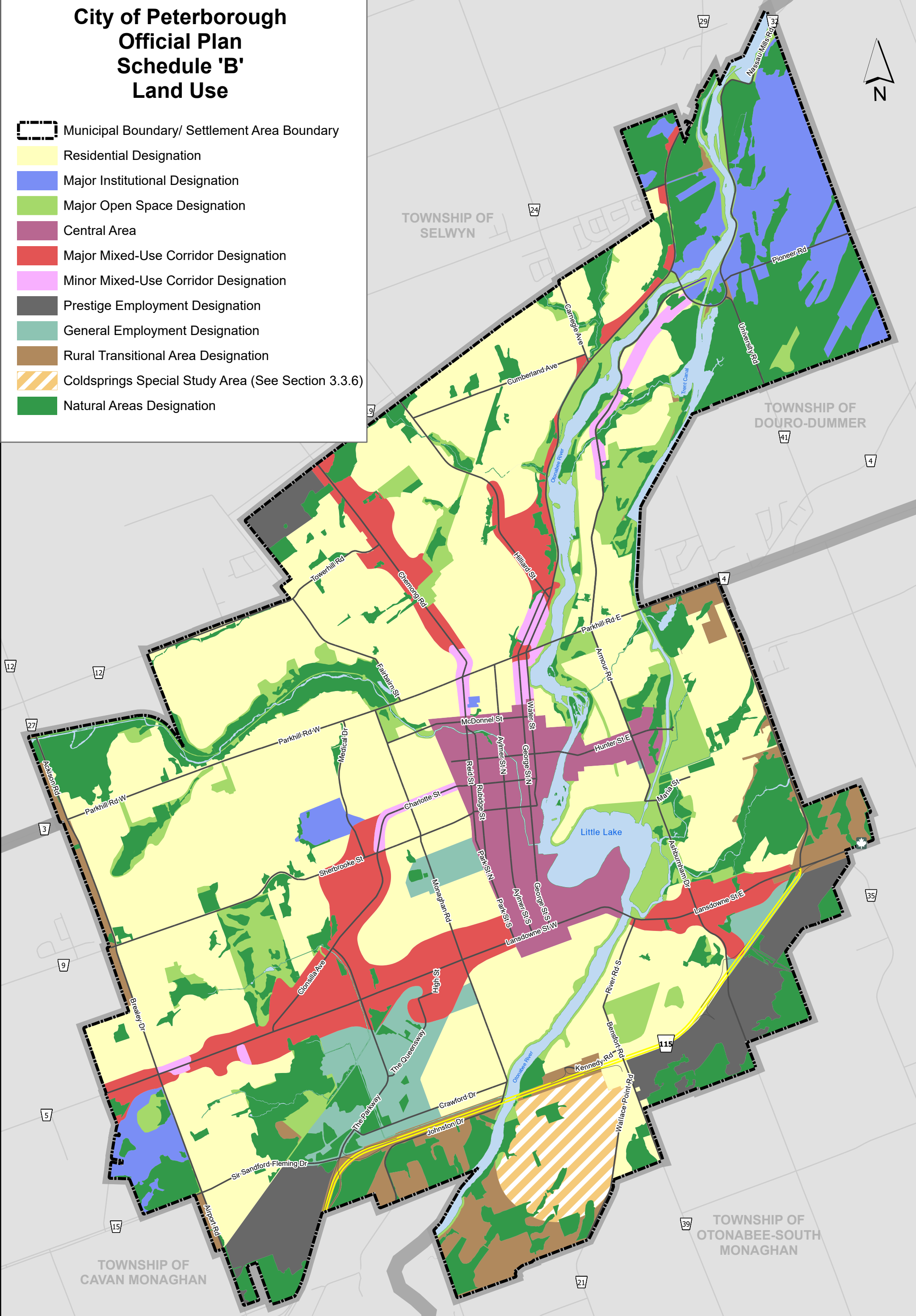


City of Peterborough
Official Plan
Schedule 'B'
Land Use

- Municipal Boundary/ Settlement Area Boundary
- Residential Designation
- Major Institutional Designation
- Major Open Space Designation
- Central Area
- Major Mixed-Use Corridor Designation
- Minor Mixed-Use Corridor Designation
- Prestige Employment Designation
- General Employment Designation
- Rural Transitional Area Designation
- Coldsprings Special Study Area (See Section 3.3.6)
- Natural Areas Designation



DISCLAIMER OF ALL LIABILITIES - The Corporation of the City of Peterborough, its employees, consultants and agents, make no representation or warranty concerning the accuracy, validity or fitness for use of the contents of this digital or hard copy mapfile, and disclaims all liability for any claims for damages or loss arising from their use or interpretation by any party. A mapfile does not replace a survey nor is it to be used to provide a legal description.

Provincial Approval: April 11, 2023

